

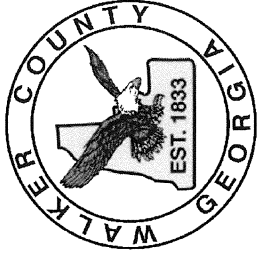
**WALKER COUNTY GOVERNMENT
WASTE MANAGEMENT NEEDS MEETING
Walker County Courthouse Annex III
201 South Main Street
LaFayette, Georgia 30768**

Date: Thursday, September 13, 2018





Time: 5:00 PM

Agenda items:

- I. Welcome and Introduction
- II. Purpose of Meeting
- III. Status of the Walker County Landfill Facility
- IV. Process for Siting New Waste Disposal Areas
- V. Public Comments or Questions
- VI. Adjourn



Legend

-  county polygon
-  towns polygon
-  Expansion Site
-  Existing Landfills

Parcels from Walker County Tax Assessors website.

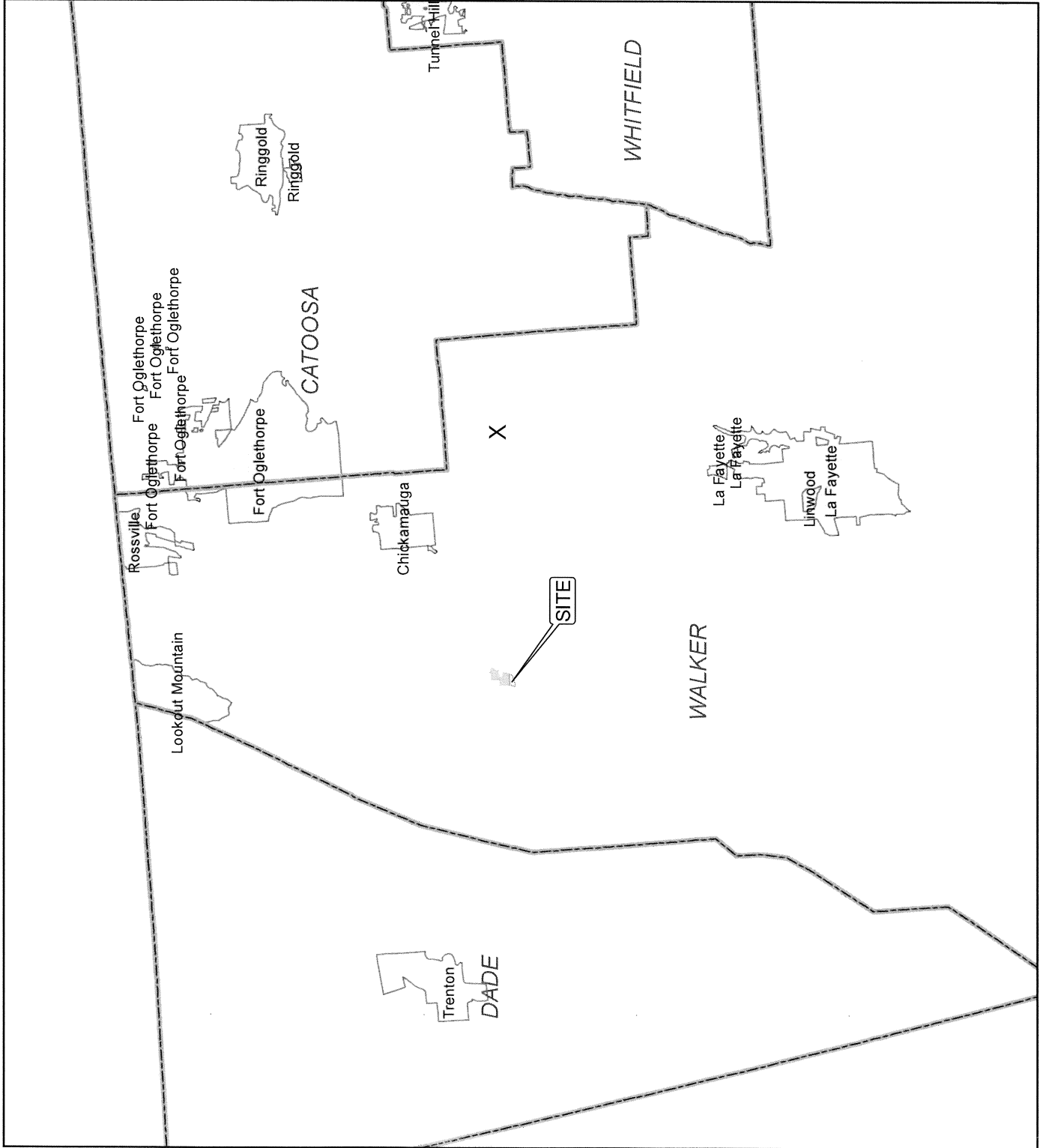
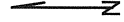


Figure 1
Site Location Map
Walker County, GA

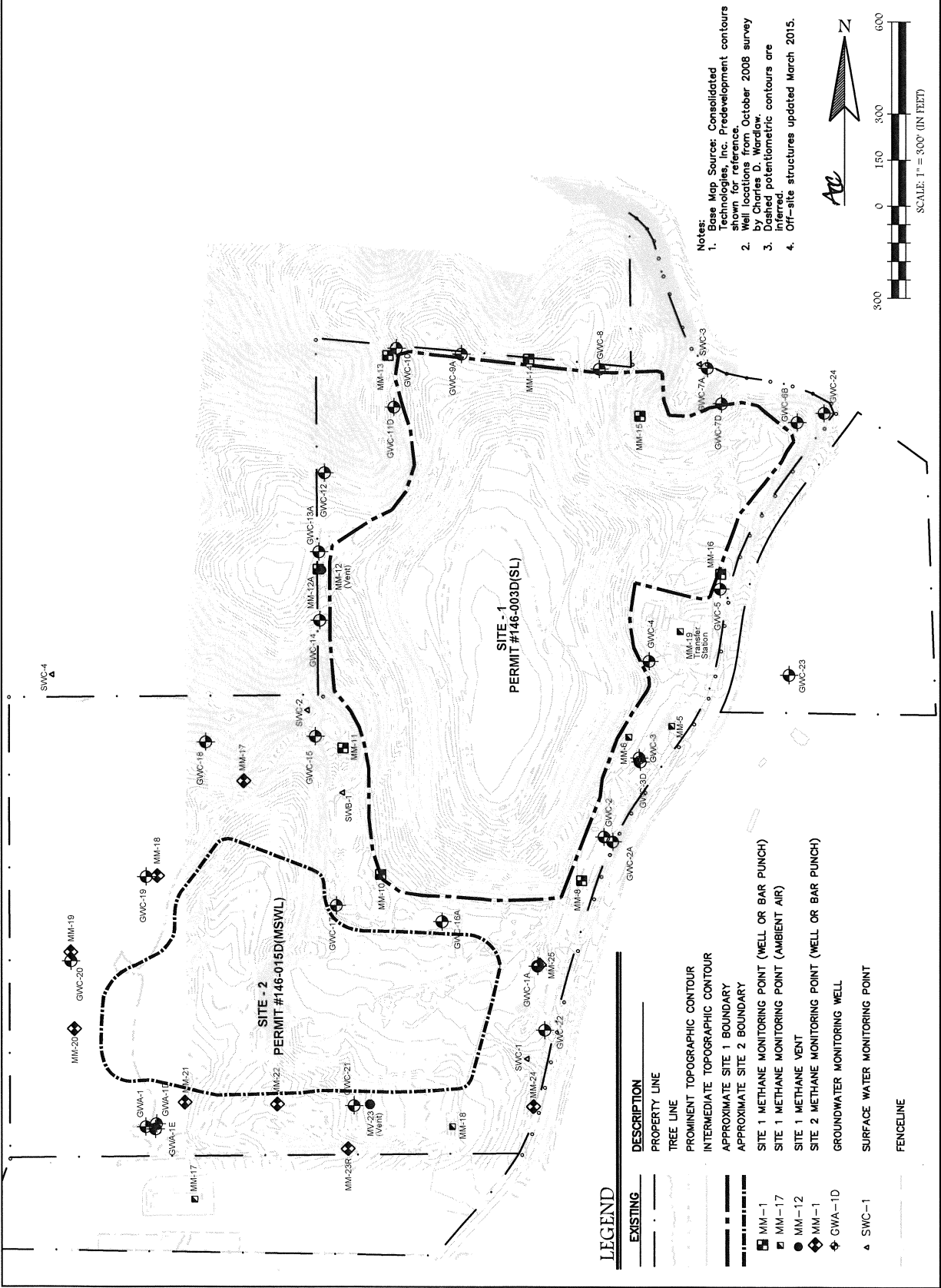
ACC
ATLANTIC COAST CONSULTING, INC.
 630 Colonial Park Drive
 Suite 110
 Roswell, GA 30075
 ☎ 770.594.5998
 ✉ 770.594.5967
 www.atlcc.net

PROJECT:
MARBLE TOP ROAD LANDFILL SITES 1 AND 2
 Site 1 Permit #146-003D(SL)
 Site 2 Permit #146-015D(MSWL)
 WALKER COUNTY, GA

WALKER COUNTY
 Walker County Government
 5120 North Marble Top Road
 Chickamauga, GA 30707
 (706) 375-8910

Drawn by: CA
 Checked by: MM
PROJECT NUMBER:
 G031-107
 July 2018

Site Map
FIGURE 2





ATLANTIC COAST
CONSULTING, INC.
630 Colonial Park Drive
Suite 110
Roswell, GA 30075
404.584.3988
1.770.594.6967
www.atac.net

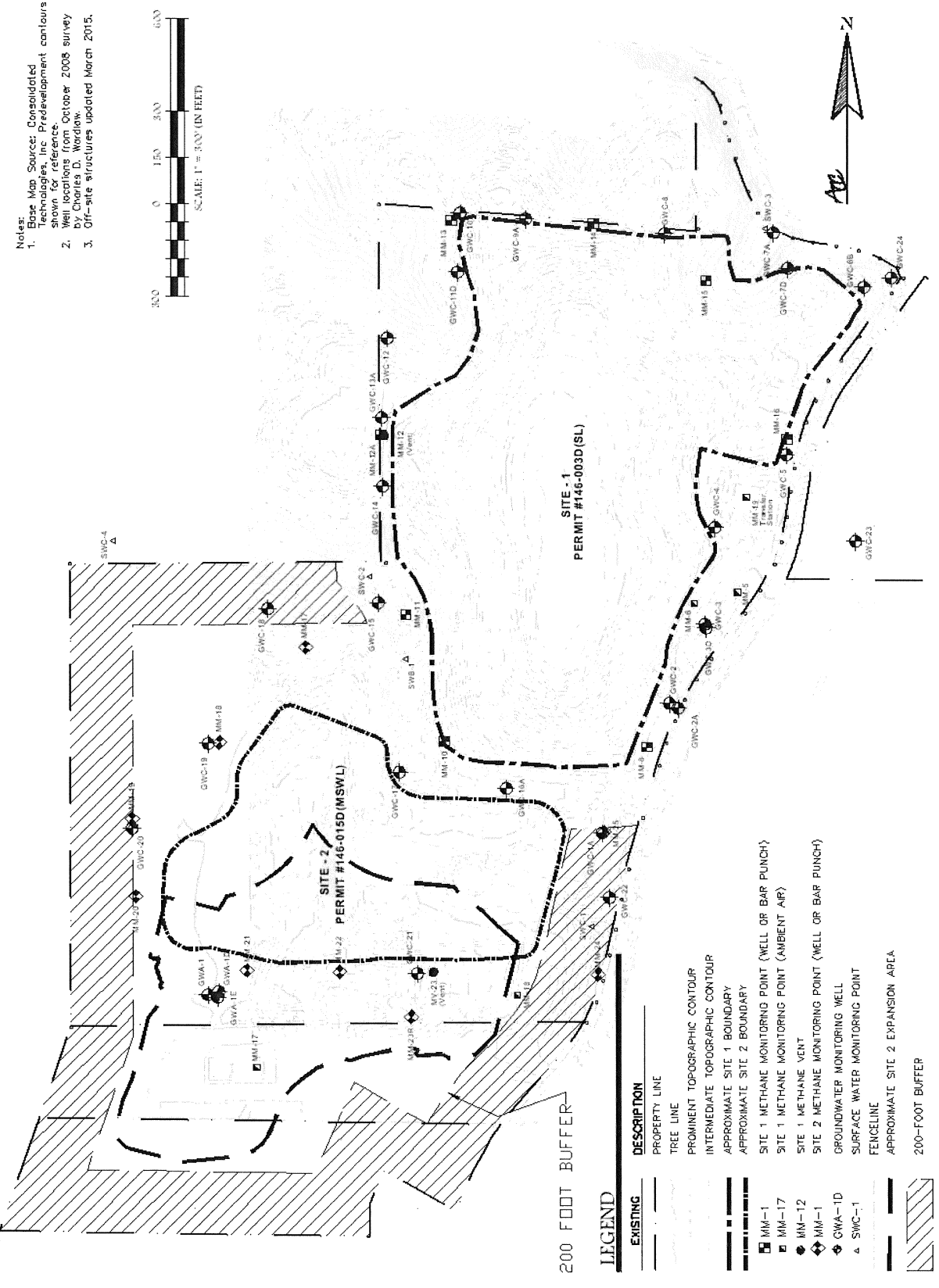
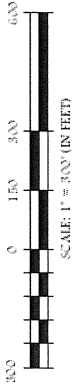
PROJECT
**MARBLE TOP
ROAD LANDFILL
SITES 1 AND 2**
Site 1 Permit # 146-003D (SL)
Site 2 Permit # 146-015D (MSWL)
WALKER COUNTY, GA

WALKER
COUNTY
Walker County Government
314 North Main Street
Chattahoochee, GA 30927
706.375.8310

PROJECT NUMBER
G031-106
August 2018

CONCEPTUAL
EXPANSION
AREA
FIGURE 3

- Notes:
1. Base Map Source: Consolidated Technologies, Inc. Predevelopment contours shown for reference.
 2. Well locations from October 2008 survey by Charles D. Wordlaw.
 3. Off-site structures updated March 2015.



LEGEND

EXISTING	DESCRIPTION
—	PROPERTY LINE
—	TREE LINE
—	PROMINENT TOPOGRAPHIC CONTOUR
—	INTERMEDIATE TOPOGRAPHIC CONTOUR
—	APPROXIMATE SITE 1 BOUNDARY
—	APPROXIMATE SITE 2 BOUNDARY
■	SITE 1 METHANE MONITORING POINT (WELL OR BAR PUNCH)
●	SITE 1 METHANE MONITORING POINT (AMBIENT AIR)
◆	SITE 2 METHANE MONITORING POINT (WELL OR BAR PUNCH)
◆	SITE 2 METHANE MONITORING POINT (AMBIENT AIR)
◆	GROUNDWATER MONITORING WELL
◆	SURFACE WATER MONITORING POINT
—	FENCELINE
—	APPROXIMATE SITE 2 EXPANSION AREA
—	200-FOOT BUFFER

Project: 106 - Walker County\106 - Cdd Expansion\3 - Additional Services\Sting Decision Waste Needs Agenda Review\DW\03\Figure 3 Walker County Map.dwg 2018-09-12 10:11 MALONE